



The Symphony Kenya project

Build capacity and a tool for cumulative impact assessment



April 2026

The Symphony Kenya project is a joint project by KMFRI and SwAM, Kenya and Sweden

What: Build capacity and a tool for cumulative impact assessment for Kenya MSP on two scales: national and a local

Why: Strengthen capacity for ecosystem-based marine spatial planning, use cumulative impact assessments to inform planning and decision-making.

Who: The team of Kenya and Sweden, with KMFRI, Kenya MSP team, SGU, SLU, SwAM and the Nairobi Convention Secretariat

How : Together

Where: Online + onsite Kenya

When: 2026 and 2027





Overall goal

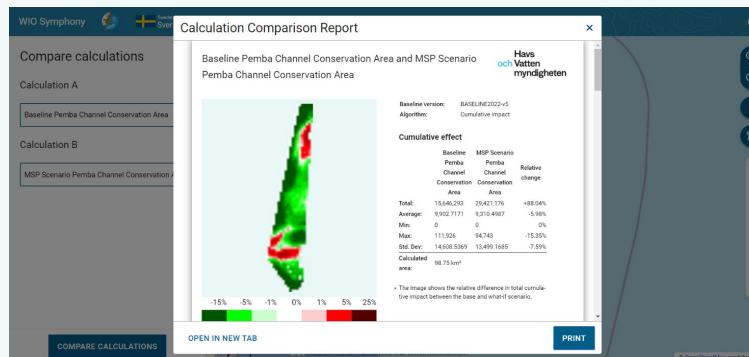
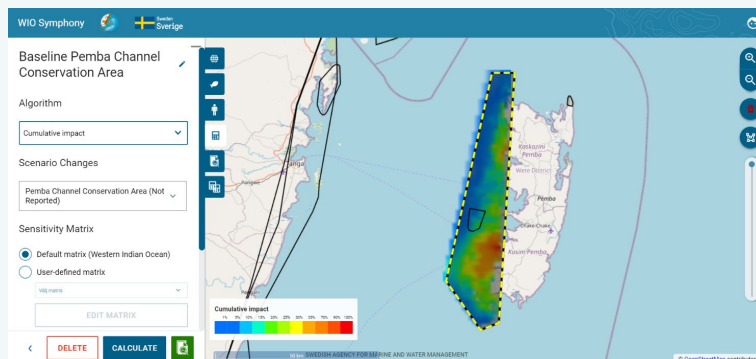
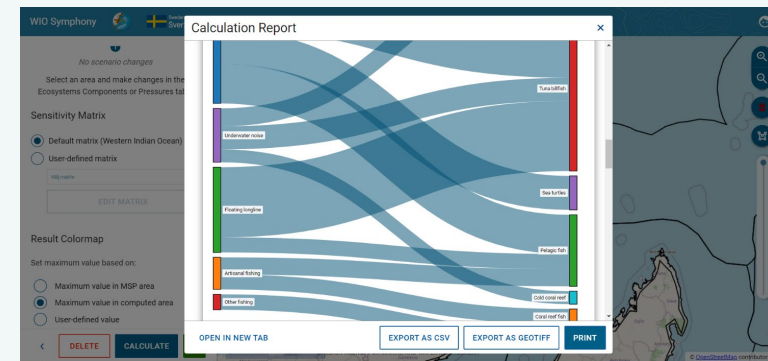
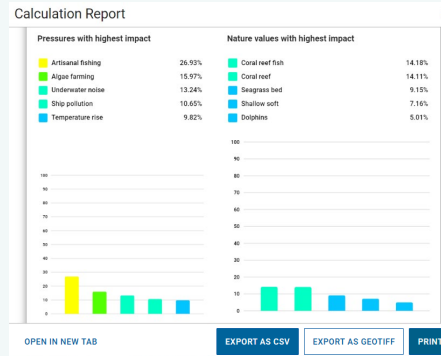
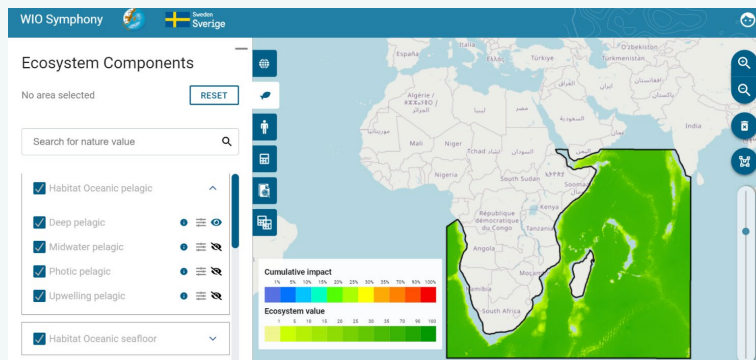
To strengthen Kenya's capacity for ecosystem-based marine spatial planning through the integration of the Symphony tool at both national and local scales, and to use cumulative impact assessments to inform planning and decision-making

Specific objectives

1. National scale 250 m: Develop a nationwide Symphony dataset and model framework at 250 m resolution to support Kenya's national MSP process.
2. Local MSP high-resolution where data permits: Develop a high-resolution Symphony model for a designated local MSP area.
3. Provide technical guidance on data and server specifications, model workflows, and scaling between national and local datasets.
4. Support KMFRI's ICT team to install, test, and operate Symphony locally and on a scale.
5. Support KMFRI's MSP team to use Symphony effectively for analysing scenarios and informing MSP decisions.
6. Produce cumulative impact assessments to inform both national MSP processes and detailed local planning.
7. Facilitate knowledge exchange between SwAM, KMFRI, and the Nairobi Convention Secretariat (NCS).
8. Implement capacity-building to help KMFRI and partners improve their ability to produce, process, and maintain MSP data.

Symphony is a web tool that supports marine spatial planning by assessing environmental impact from human activities

- » Visualize data, test scenarios, see top impacts, and compare different ways of using the ocean
- » Symphony highlights threats and values



Joint development: mutual benefits



- » **Kenya** build in-house capacity in terms of skills, procedures, systems and assets
- » **Sweden** build capacity in local national tools and adaptations
- » **WIO** learn lessons shared, so that others can replicate
- » **All** improve open tools together

Expert team work



Building the Symphony Kenya tool together means collecting data, programming scripts, modelling maps, setting ecological scores and reviewing it all, with experts on data, fishing, planning, ecology, shipping and wildlife.

Expert team work.



Funding Symphony Kenya project

The Symphony Kenya project is a joint project by KMFRI and SwAM, Kenya and Sweden

- » The Kenyan part is made possible thanks to the Strengthening Blue Food Systems in Shimoni and Vanga project, a NORAD-funded Kenya-Norway 2025-2028 bilateral programme.
- » The Swedish part is made possible thanks to a bilateral environment cooperation funded by the Government Offices of Sweden, and a development cooperation funded by Sida, the Swedish International Development Cooperation Agency.

Contacts

KMFRI

Harrison Ong'anda
www.kmfri.go.ke

SwAM

Wilhelm Gårdmark and Pichaya Zerne
www.havochvatten.se

The Kenyan part of this work is made possible thanks to the Strengthening Blue Food Systems in Shimoni and Vanga project, a NORAD-funded Kenya-Norway 2025-2028 bilateral programme.

The Swedish part of this work made possible thanks to a bilateral environment cooperation funded by the Government Offices of Sweden, and development cooperation funded by Sida, the Swedish International Development Cooperation Agency.

The contents are the sole responsibility of the author. The views and opinions expressed do not necessarily reflect those of the Government Offices nor Sida. Neither the Government Offices nor Sida can be held responsible for them.



Swedish Agency
for Marine and
Water Management



www.havochvatten.se



Report suspicions of
corruption, irregularities and other wrongdoings
to SwAM's whistleblower function

www.havochvatten.se/en/our-organization/about-swam/whistleblowing